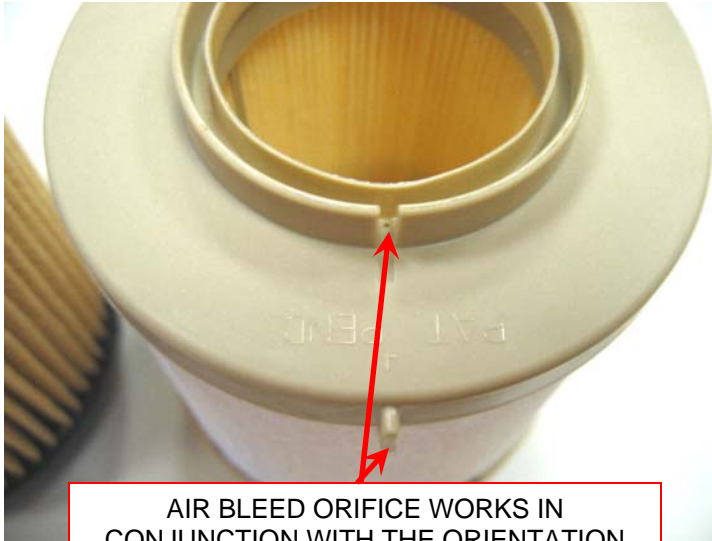


## WIX 6.0L POWERSTROKE REPLACEMENT ELEMENTS

### MISSING CRITICAL FEATURES AIR BLEED ORIFICE



AIR BLEED ORIFICE WORKS IN CONJUNCTION WITH THE ORIENTATION TAB TO ALLOW AIR TO BE PURGED FROM THE TOP HALF OF THE MODULE



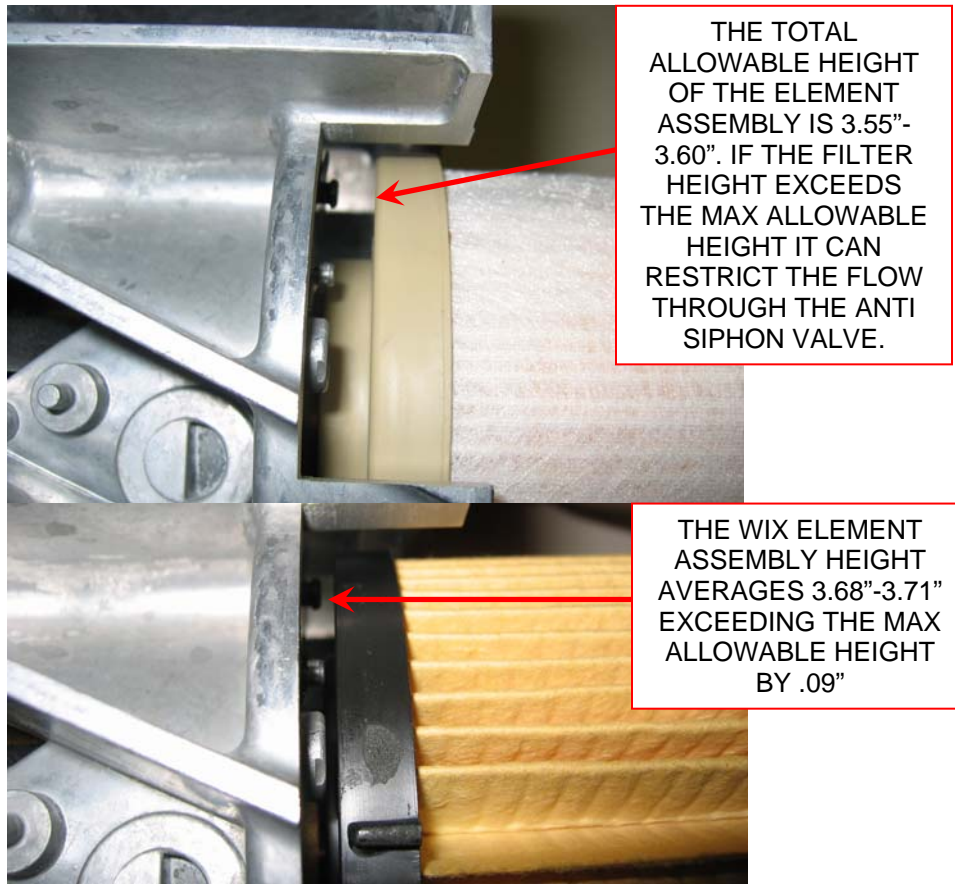
ORIENTATION TAB IS PRESENT ON WIX FILTER BUT AIR BLEED ORIFICE IS MISSING. FILTER HOUSING WILL ONLY FILL HALF WAY UTILIZING ½ OF THE FILTER MEDIA REDUCING LIFE AND EFFICIENCY

### WATER BARRIER OUTERWRAP



The outer wrap on the Racor OEM filter pre separates out water droplets before reaching the pleated media to prevent the water droplets from settling in the pleats on the upper half of the element. As droplets build up in the valleys of the pleats the filter media will become saturated and begin passing water.

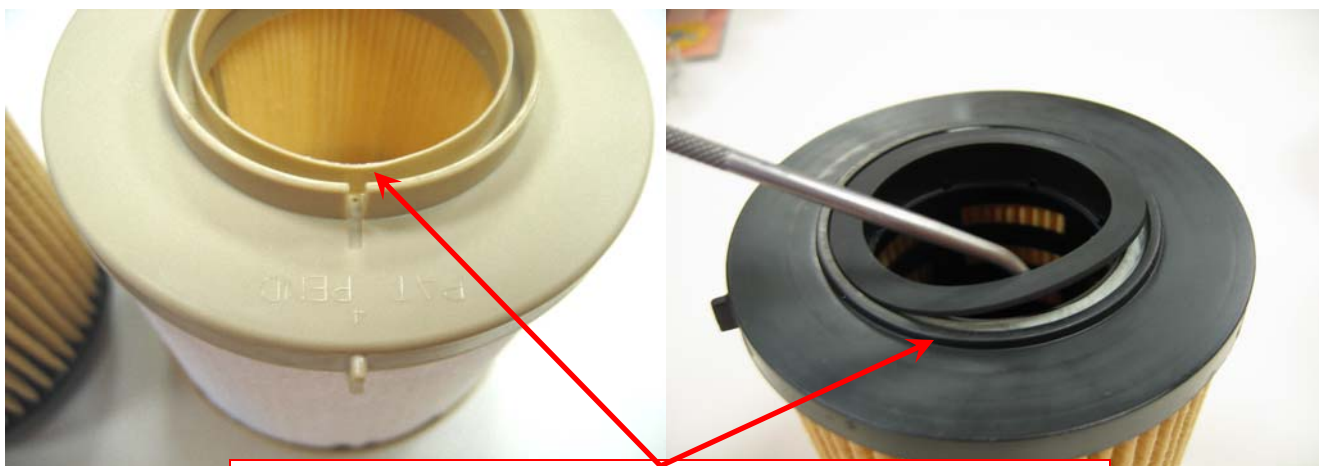
**FIT AND FUNCTION**



THE TOTAL ALLOWABLE HEIGHT OF THE ELEMENT ASSEMBLY IS 3.55"-3.60". IF THE FILTER HEIGHT EXCEEDS THE MAX ALLOWABLE HEIGHT IT CAN RESTRICT THE FLOW THROUGH THE ANTI SIPHON VALVE.

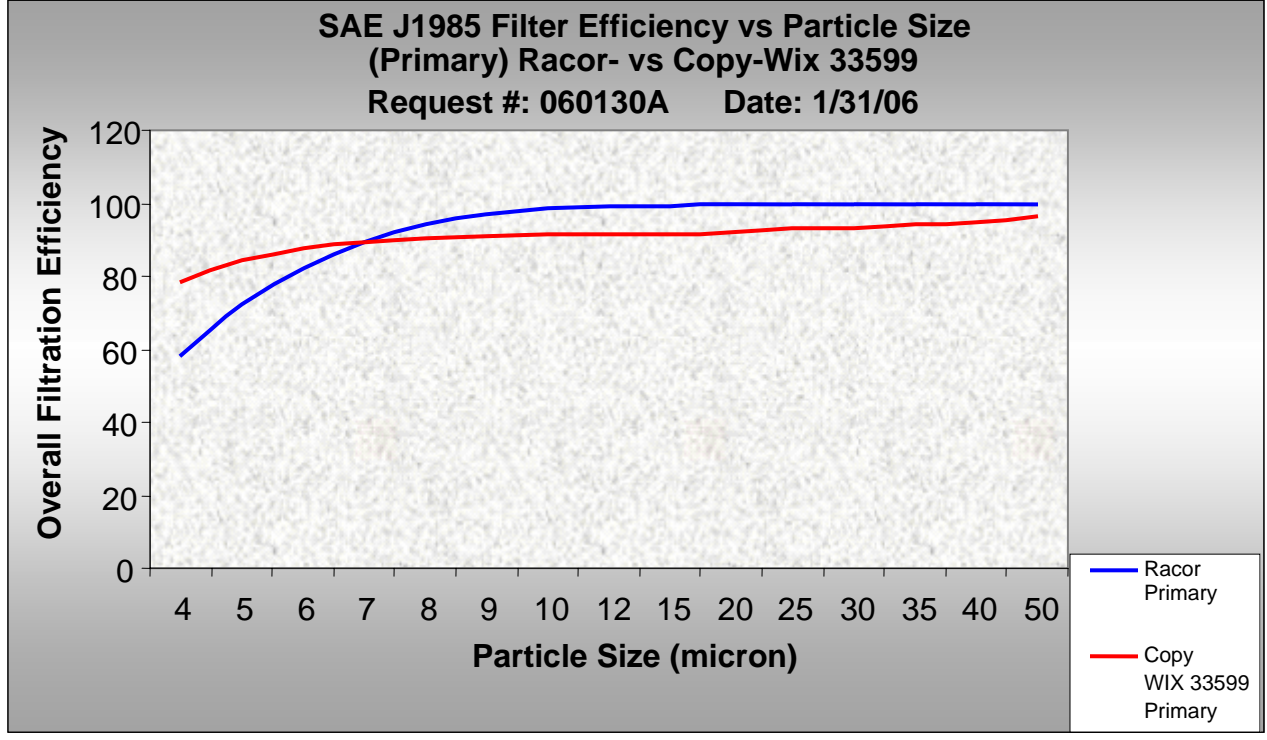
THE WIX ELEMENT ASSEMBLY HEIGHT AVERAGES 3.68"-3.71" EXCEEDING THE MAX ALLOWABLE HEIGHT BY .09"

**QUALITY BYPASS SEAL DESIGN**



SEAL ON WIX ELEMENT CAME "UNGLUED" AFTER INSTALLED ONTO PUMP AND REMOVED. SEAL FAILURE WILL ALLOW WATER/CONTAMINATION BYPASS. OEM ELEMENT USES MOLDED IN LIP SEAL STRETCHED AROUND THE PUMP BODY TO SEAL AGAINST PUMP O.D.

**PERFORMANCE**  
**PRIMARY FILTER EFFICIENCY**  
 FORD SPECIFICATION 91% @ 10 MICRON  
 RACOR EFFICIENCY 98.4% @ 10 MICRON  
 WIX EFFICIENCY 90.9% @ 10 MICRON



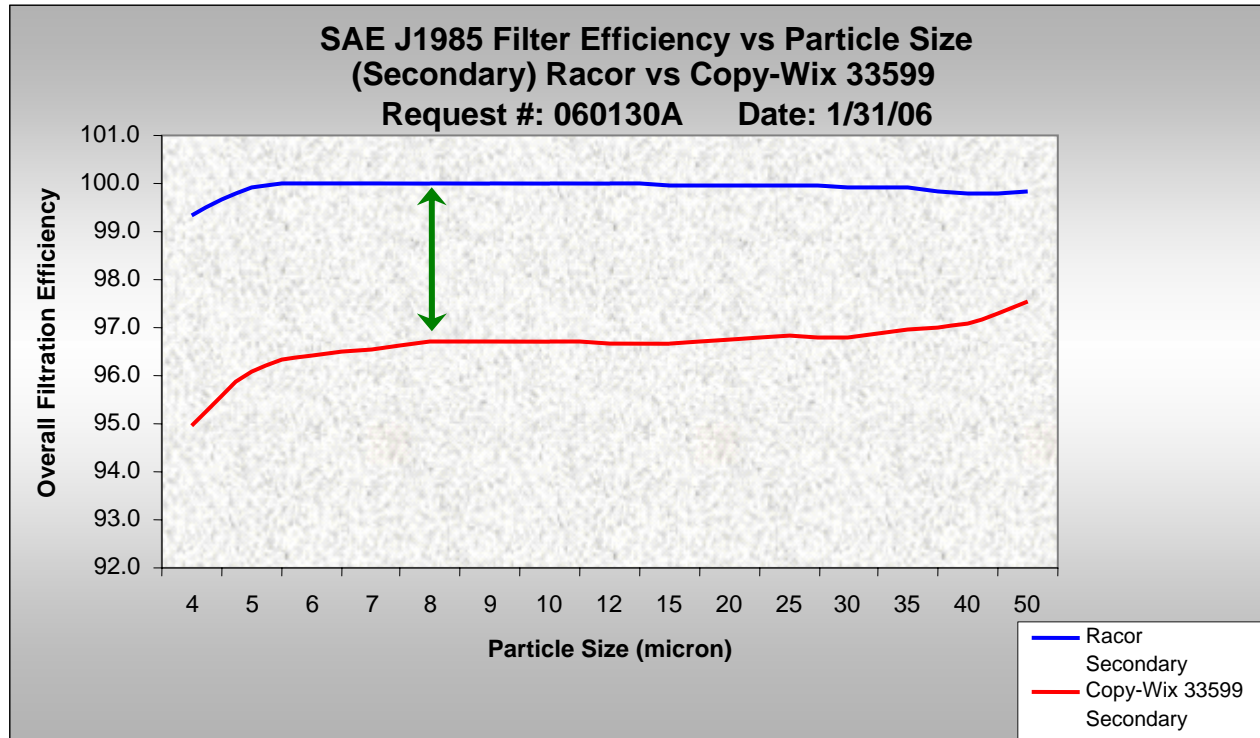
**SECONDARY FILTER QUALITY**

**ONE OF THE 6 FILTERS WE EVALUATED WAS PACKAGED MISSING THE BOTTOM END CAP**



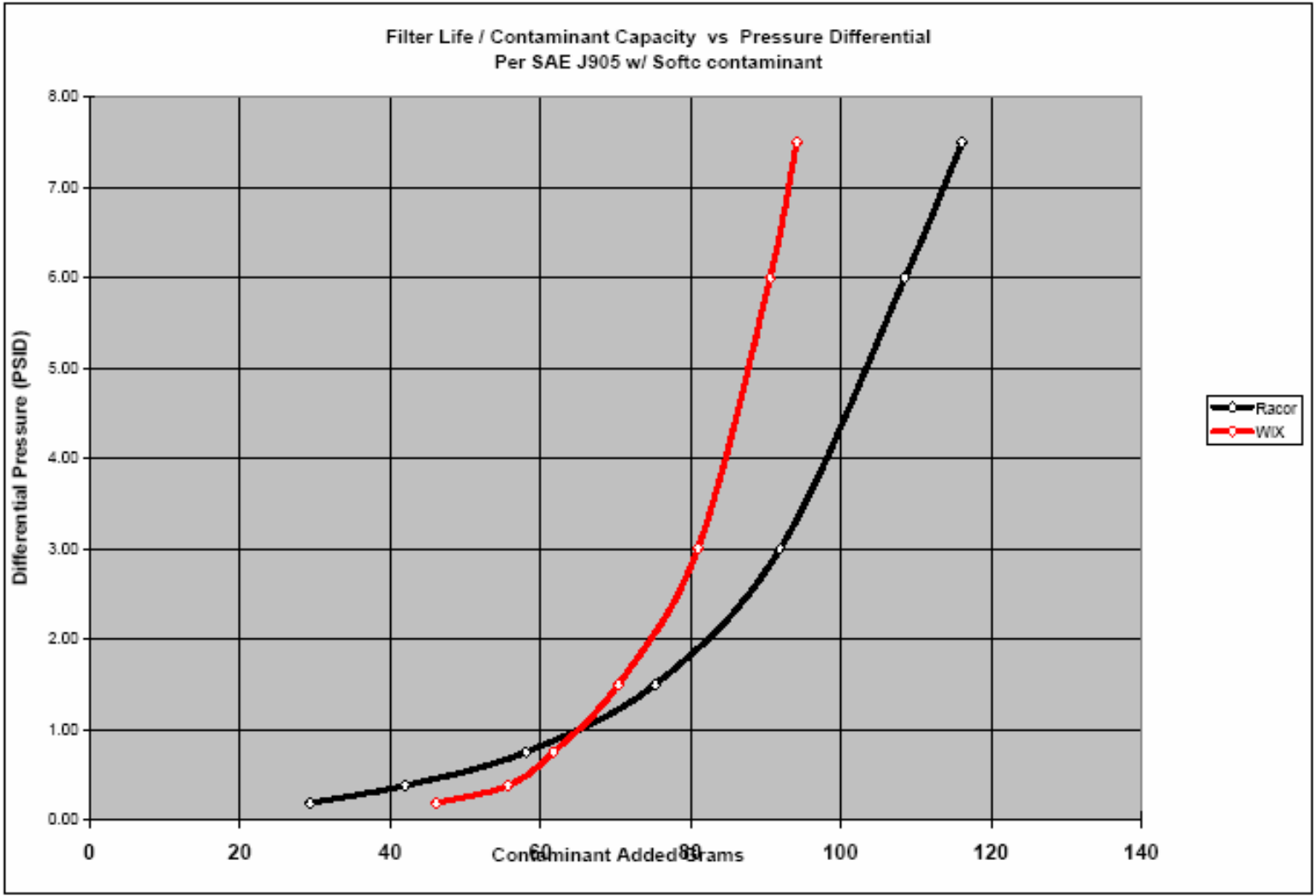
**PERFORMANCE**  
**SECONDARY FILTER EFFICIENCY**

ITEC SPECIFICATION: 98% @ 4 MICRON  
 RACOR EFFICIENCY: 99.4% @ 4 MICRON  
 WIX EFFICIENCY: 95% @ 4 MICRON



THE RACOR SECONDARY FILTER PROTECTS CRITICAL FUEL SYSTEM COMPONENTS FROM DAMAGING PARTICLES EFFICIENTLY IN ALL PARTICLE SIZES FROM 4 TO 50 MICRONS.(SAE J1985)

## FILTER LIFE AND CLOGGING CAPACITY



THE RACOR PRIMARY AND SECONDARY FILTER ELEMENTS ARE BETTER BALANCED FOR OPTIMAL CONTAMINANT LOADING AND PROVIDE 20% LONGER FILTER LIFE. (PER SAE J905, SOFTC-2A).

## IMPORTANT CATALOG CORRECTION BULLETIN

**January 16, 2006**

This bulletin is to inform you of an application error in both the 2005 & 2006 NAPA Application Catalogs.

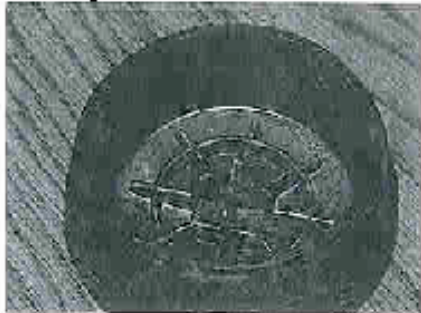
YEAR	APPLICATIONS	SERVICE FUEL
<b>Catalog Reads:</b> 2005/2006	Ford F Series w/V8 6.0 L Diesel Engine	3599
<b>Correction:</b> 2005/2006	Ford F Series w/V8 6.0L Diesel Engine	N/A NO Replacement

We **DO NOT** currently have a replacement part number for these applications. **DO NOT FORCE** the 3599 into the fuel filter housing, it could damage the fuel release valve.

A new replacement part number is scheduled for release as soon as possible.

A host of changes have been made to the 6.0 litre diesel engine since its release in 2003. A new housing cap was one of the changes made in 2005. The new caps have support ridges which will not allow our 3599 to fit. Pictures of the old and new caps are below.

**Old Cap**



**New Cap**



We apologize for any inconvenience this may have caused you or your customers.

Sincerely,

Barry L. Faile  
Product Planning Manager